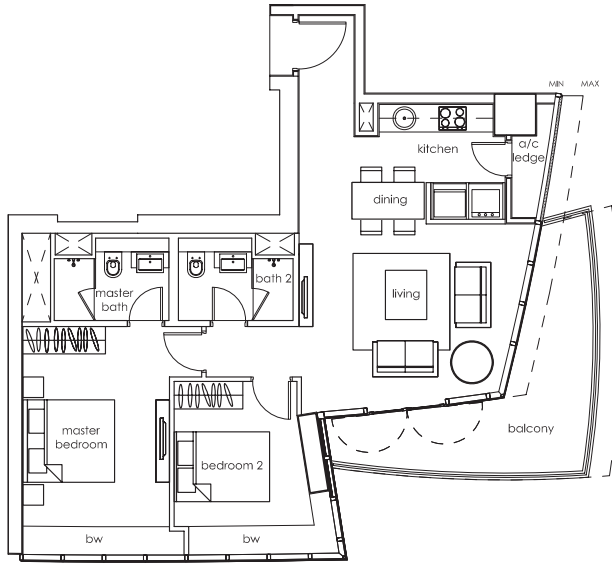
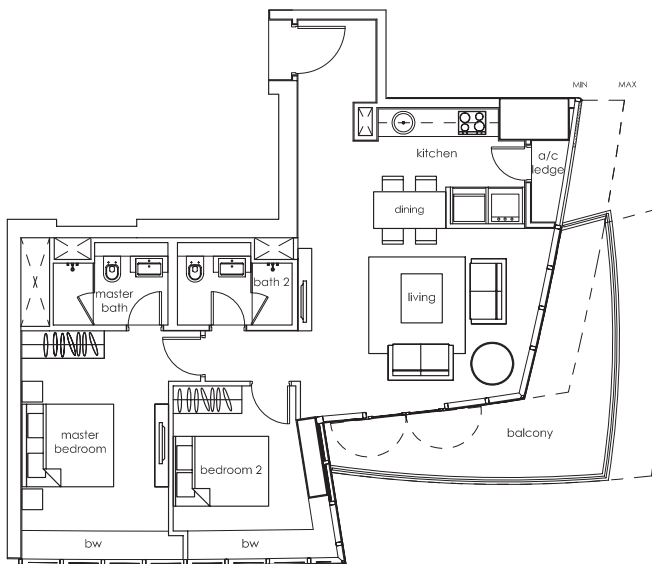


## 2-BEDROOM APARTMENT



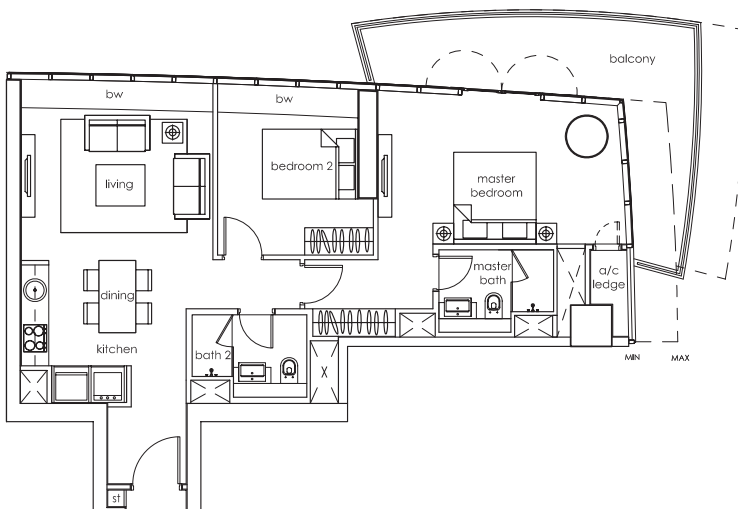
### TYPE A-2-a

#09-05	:	98 sq m (1,055 sq ft)
#10-05 & #11-05	:	99 sq m (1,066 sq ft)
#12-05 & #13-05	:	100 sq m (1,076 sq ft)
#14-05	:	101 sq m (1,087 sq ft)
#18-05 & #19-05	:	103 sq m (1,109 sq ft)
#20-05 to #22-05	:	104 sq m (1,119 sq ft)
#28-05 to #31-05	:	106 sq m (1,141 sq ft)
#35-05	:	105 sq m (1,130 sq ft)
#36-05 to #42-05	:	104 sq m (1,119 sq ft)



### TYPE A-2-b

#15-05	:	103 sq m (1,109 sq ft)
#23-05	:	106 sq m (1,141 sq ft)
#32-05	:	106 sq m (1,141 sq ft)



### TYPE A-2-c

#09-03 & #10-03	:	102 sq m (1,098 sq ft)
#11-03 to #14-03	:	103 sq m (1,109 sq ft)
#18-03 & #19-03	:	104 sq m (1,119 sq ft)
#20-03 to #22-03	:	105 sq m (1,130 sq ft)
#28-03 to #31-03	:	106 sq m (1,141 sq ft)
#35-03	:	106 sq m (1,141 sq ft)
#36-03 to #42-03	:	105 sq m (1,130 sq ft)