

33 Fort Road 福景苑
FUJICRUM

I am the Now. I am the Forever.
33 Fort Road in District 15.

128 Exclusive **Freehold** Residences with
Katong Park MRT station at your doorstep.

I am Above All.

Take in the panoramic view of the surrounding nature as you cast your gaze upon the East Coast beach. Poised near the edge of the sea, I am just minutes away from the CBD, placing you moments from the sand, sea and waves, for all that you love and desire.

I am your modern, resort-style lifestyle that rises above all.

I am the Fulcrum.



Artist's Impression

I am Here. I am Everywhere.

Golf. An eclectic meal. Shopping therapy. Office. Top schools. Your wishes, fulfilled almost instantly.



Singapore Sports Hub/
Kallang Wave Mall
2-min drive*



Dunman High School
4-min walk*



Marina Bay Golf Course
6-min drive*



Singapore Flyer
7-min drive*



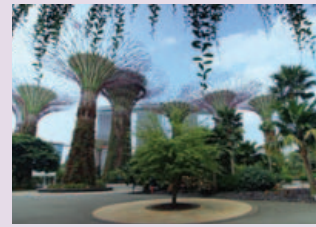
Parkway Parade
8-min drive*



Marina Bay Sands
Integrated Resort
8-min drive*



Central Business District
10-min drive*



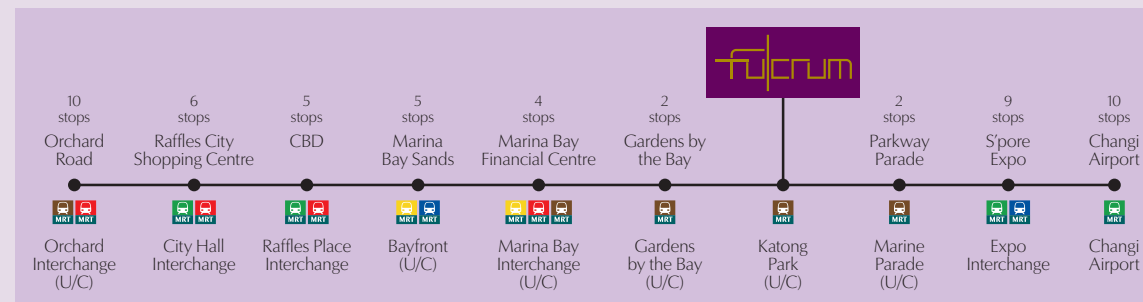
Gardens by the Bay
9-min drive*



East Coast Park
6-min walk*



Changi Airport
12-min drive*



Map not drawn to scale



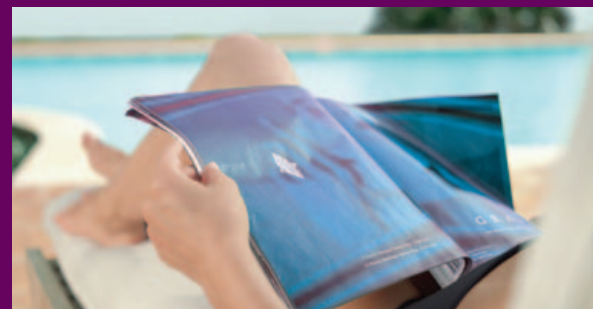
Artist's Impression



Sky Gym



Sky Dining



Sky Lounges

I am the Entertainer.

Pick from a wide array of facilities in the Sky Gardens. Enjoy dining under the stars at Skye @ Level 13 or soothe your stresses at Sea-Breeze @ Level 15. Need some alone time? Simply head to Senses @ Level 5 for a quiet respite at the wellness deck. Be entertained, wherever you are.



Artist's Impression

I am your Sanctuary.

Bask in the utmost peace and tranquility as you do your laps in the inviting waters of the Swimming Pool with azure skies for company. I am your retreat, the way you want.



BBQ Party Pavilion



Sunning Deck



Kid's Pool



Artist's Impression

I am the City. I am the Sea.

Fulcrum offers Manhattan-esque living with loft modern design and layout that brings natural lighting and breeze. Enjoy expansive views of the city or the sea, whichever mood you are in.

Storey Plan

AQUA @ Level 19

- Aqua Lounge
- Tranquility Spa



SENSES @ Level 5

- Wellness Terrace



SUN AND CHILL @ Level 1

- Party Spa
- BBQ Party Pavilion
- Party Lawn
- Party Deck
- Conversation Deck
- Social Deck
- Kid's Pool
- Spa Pool
- Social Pavilion
- Bubble Pool
- Leisure Pool
- Sunning Deck
- Starry Haven
- Bridge of Balance
- Lounge Deck
- Lounge Pavilion
- Outdoor Lap Pool
- Children's Playground
- The Courtyard



SEA-BREEZE @ Level 15

- Day Lounge
- Infinity Spa Pool
- Sea-Breeze Spa
- Sea Wind Spa
- Sea View Lounge
- Wind Capsule
- Lumi Bar
- Breezing Lounge
- Sensual Spa
- Relaxation Deck



SKYE @ Level 13

- Skye Light
- Gourmet Gallery
- Cirrus Bar
- Sky Deck
- Sky Lounges
- Covered Lap Pool
- Sky Spa Jets
- Cloud 9 Lounge
- Sky Suites
- Sky Gym
- Powder Room
- Sky Bar
- Sky Dining



TERRAIN @ Basement 1

- Grand Entrance
- Side Gate
- Circle of Wealth
- Grand Drop-Off
- Grand Lobby
- Golf Deck
- Changing Room
- Putting Green
- Golf Practice Range



LEGEND:

TERRAIN @ Basement 1

1. Grand Entrance
2. Side Gate
3. Circle of Wealth
4. Grand Drop-Off
5. Grand Lobby
6. Golf Deck
7. Changing Room
8. Putting Green
9. Golf Practice Range

SUN AND CHILL @ Level 1

10. Party Spa
11. BBQ Party Pavilion
12. Party Lawn
13. Party Deck
14. Conversation Deck
15. Social Deck
16. Kid's Pool
17. Spa Pool
18. Social Pavilion
19. Bubble Pool
20. Leisure Pool
21. Sunning Deck
22. Starry Haven
23. Bridge of Balance
24. Lounge Deck
25. Lounge Pavilion
26. Outdoor Lap Pool
27. Children's Playground
28. The Courtyard

Sky Gardens

SENSES @ Level 5



LEGEND:

29. Wellness Terrace



Wellness Terrace



Wellness Terrace

SEA-BREEZE @ Level 15



LEGEND:

- 42. Day Lounge
- 43. Infinity Spa Pool
- 44. Sea-Breeze Spa
- 45. Sea Wind Spa
- 46. Sea View Lounge
- 47. Wind Capsule
- 48. Lumi Bar
- 49. Breezing Lounge
- 50. Sensual Spa
- 51. Relaxation Deck

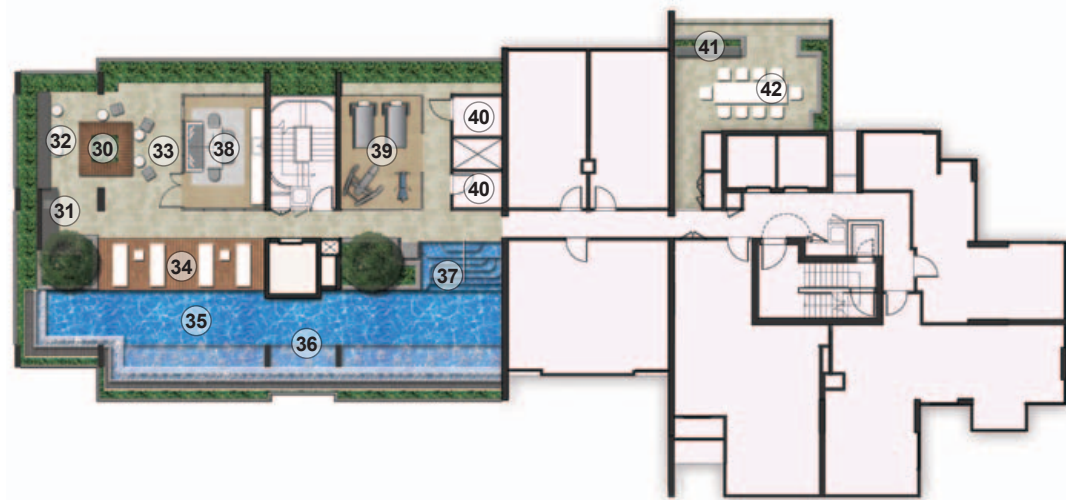


Wind Capsule



Infinity Spa Pool

SKYE @ Level 13



LEGEND:

- 30. Skye Light
- 31. Gourmet Gallery
- 32. Cirrus Bar
- 33. Sky Deck
- 34. Sky Lounges
- 35. Covered Lap Pool
- 36. Sky Spa Jets
- 37. Cloud 9 Lounge
- 38. Sky Suites
- 39. Sky Gym
- 40. Powder Room
- 41. Sky Bar
- 42. Sky Dining



Sky Dining



Sky Lounges

AQUA @ Level 19



LEGEND:

- 52. Aqua Lounge
- 53. Tranquility Spa



Tranquility Spa

The plans are subject to change as may be required or approved by the relevant authorities. These are not drawn to scale and are for the purpose of visual presentation of the different layouts that are available. Areas are estimates only and are subject to final survey.

Unit Distribution Chart



South-East Elevation

- 1 Bedroom
- 1 Bedroom Loft
- 2 Bedroom
- 2 Bedroom Loft
- 3 Bedroom
- Penthouse
- Sky Gardens
 - Skye @ Level 13
 - Sea-Breeze @ Level 15

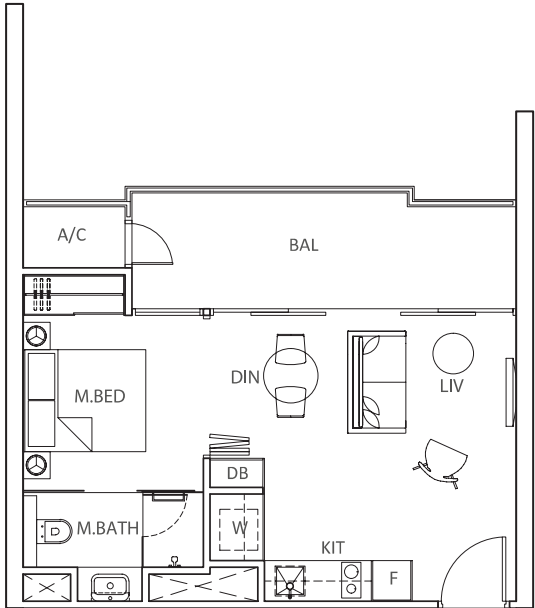


North-West Elevation

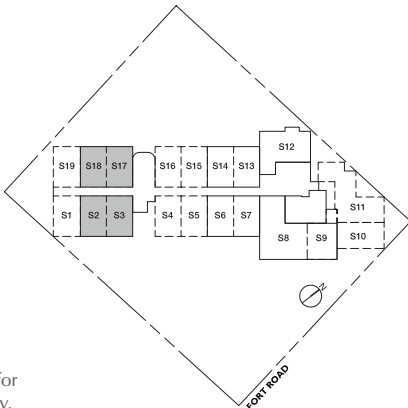
- 1 Bedroom
- 2 Bedroom
- 2 Bedroom Loft
- Sky Gardens
 - Senses @ Level 5
 - Skye @ Level 13
 - Sea-Breeze @ Level 15
 - Aqua @ Level 19

TYPE A1

1-Bedroom
 Approx 44 sqm
 (Includes A/C ledge 2 sqm & balcony 10 sqm)



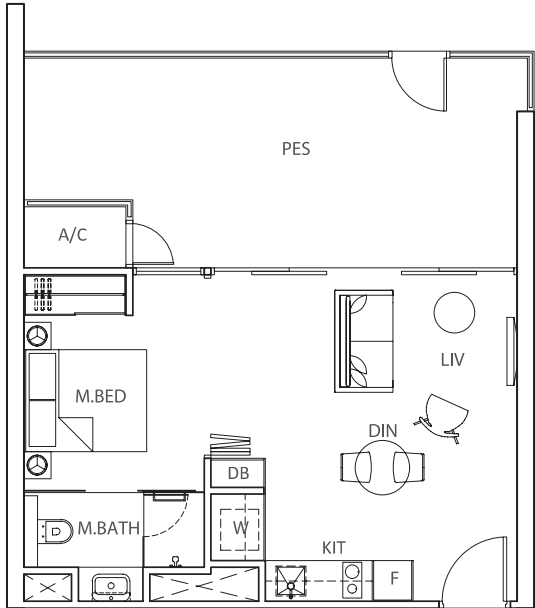
- #(02,03)-04 S17,18
- #04-05 S17,18
- #(02,03)-03 S3,2 (MIRRORED)
- #04-04 S3,2 (MIRRORED)



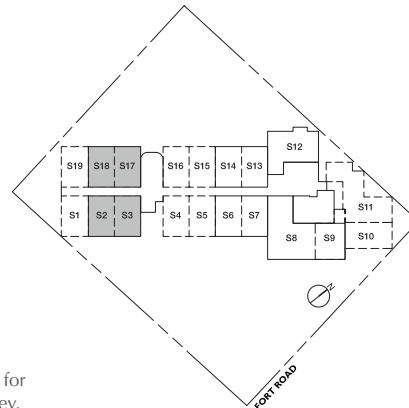
The plans are subject to change as may be required or approved by the relevant authorities. These are not drawn to scale and are for the purpose of visual presentation of the different layouts that are available. Areas are estimates only and are subject to final survey.

TYPE A1-G

1-Bedroom
 Approx 59 sqm
 (Includes A/C ledge 2 sqm & PES 22 sqm)



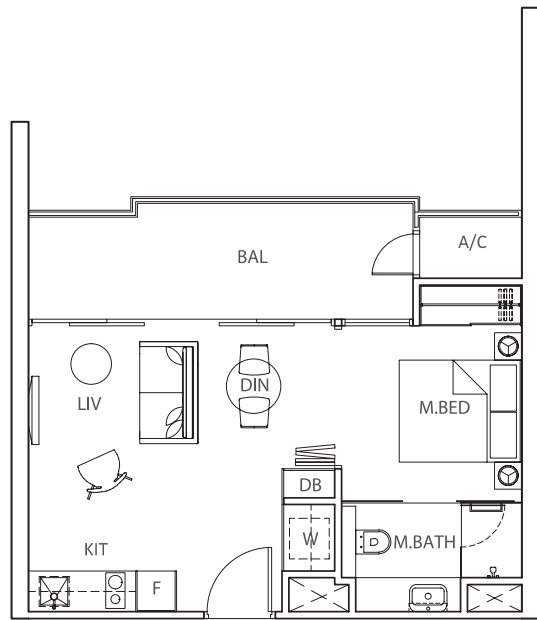
- #01-04 S17,18
- #01-03 S3,2 (MIRRORED)



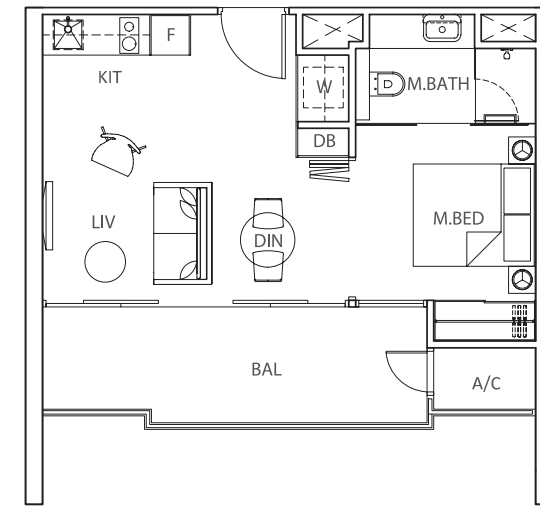
The plans are subject to change as may be required or approved by the relevant authorities. These are not drawn to scale and are for the purpose of visual presentation of the different layouts that are available. Areas are estimates only and are subject to final survey.

TYPE A2

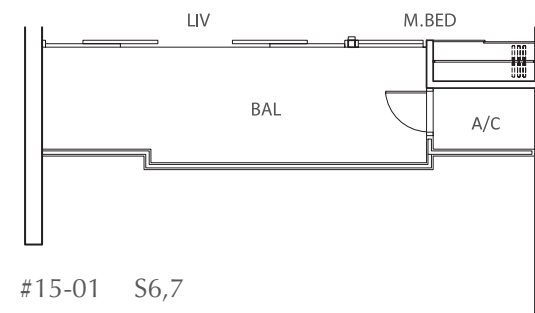
1-Bedroom
 Approx 44 sqm
 (Includes A/C ledge 2 sqm & balcony 10 sqm)



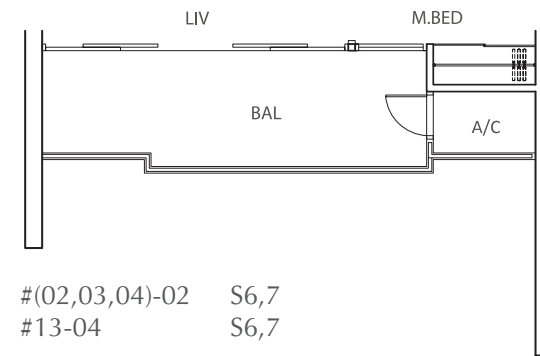
#(02,03)-05 S13,14
 #04-07 S13,14
 #(05,07,09)-13 S13,14
 #11-10 S13,14



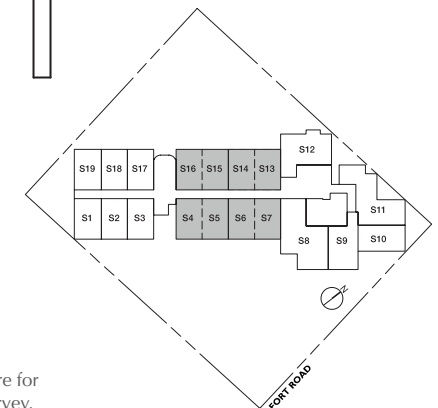
#04-03 S4,5
 #11-06 S4,5
 #15-02 S4,5
 #04-06 S15,16 (MIRRORED)
 #(05,07,09)-12 S15,16 (MIRRORED)
 #11-09 S15,16 (MIRRORED)



#15-01 S6,7



#(02,03,04)-02 S6,7
 #13-04 S6,7

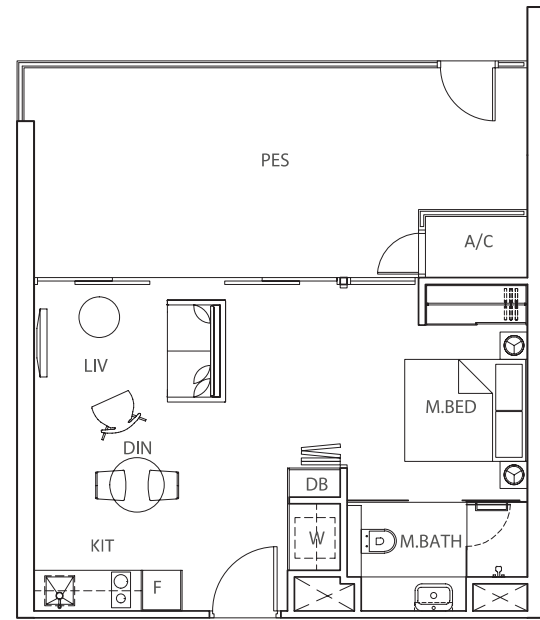


The plans are subject to change as may be required or approved by the relevant authorities. These are not drawn to scale and are for the purpose of visual presentation of the different layouts that are available. Areas are estimates only and are subject to final survey.

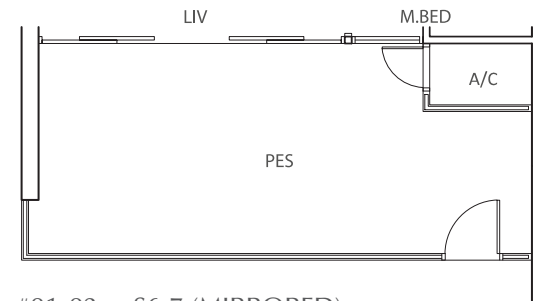
The plans are subject to change as may be required or approved by the relevant authorities. These are not drawn to scale and are for the purpose of visual presentation of the different layouts that are available. Areas are estimates only and are subject to final survey.

TYPE A2-G

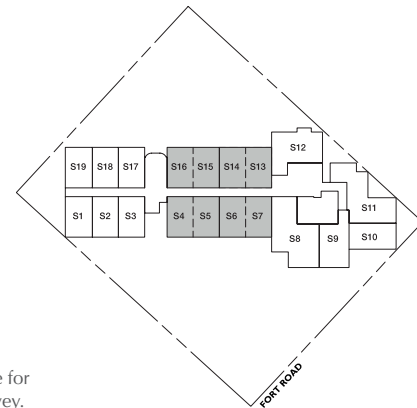
1-Bedroom
 Approx 60 sqm
 (Includes A/C ledge 2 sqm & PES 22 sqm)



#01-05 S13,14



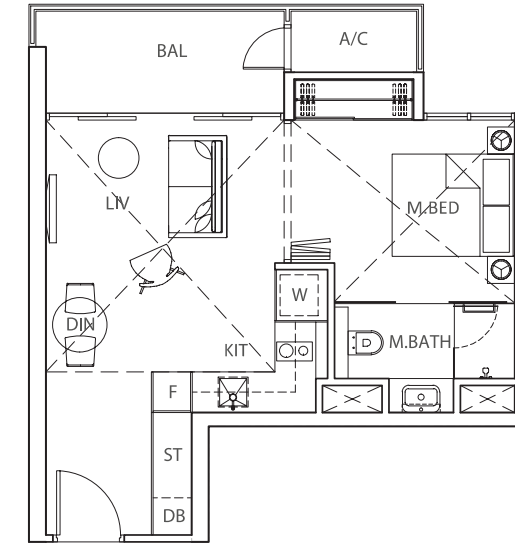
#01-02 S6,7 (MIRRORED)



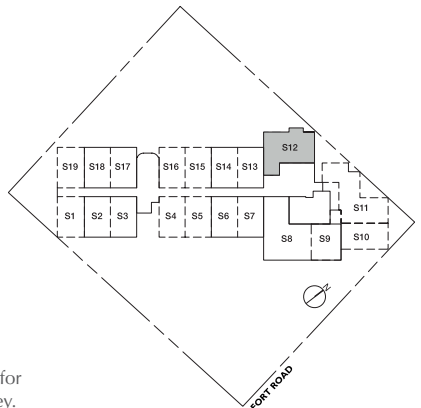
The plans are subject to change as may be required or approved by the relevant authorities. These are not drawn to scale and are for the purpose of visual presentation of the different layouts that are available. Areas are estimates only and are subject to final survey.

TYPE A3

1-Bedroom
 Approx 44 sqm
 (Includes A/C ledge 2 sqm & balcony 6 sqm)
 Double volume for liv/din & m.bed



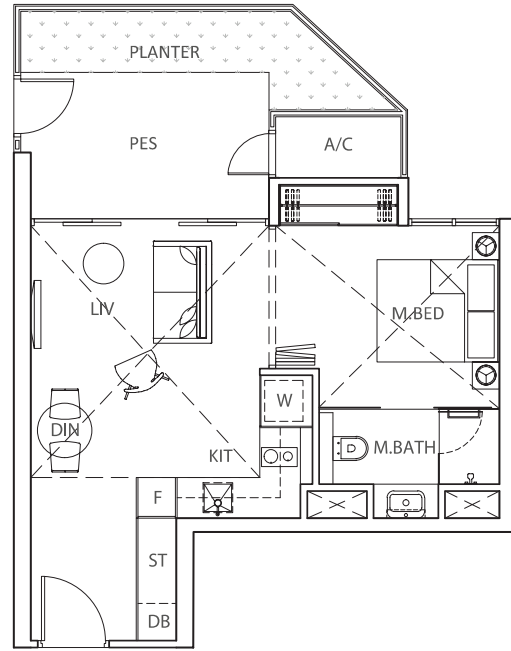
#03-06 S12



The plans are subject to change as may be required or approved by the relevant authorities. These are not drawn to scale and are for the purpose of visual presentation of the different layouts that are available. Areas are estimates only and are subject to final survey.

TYPE A3-G

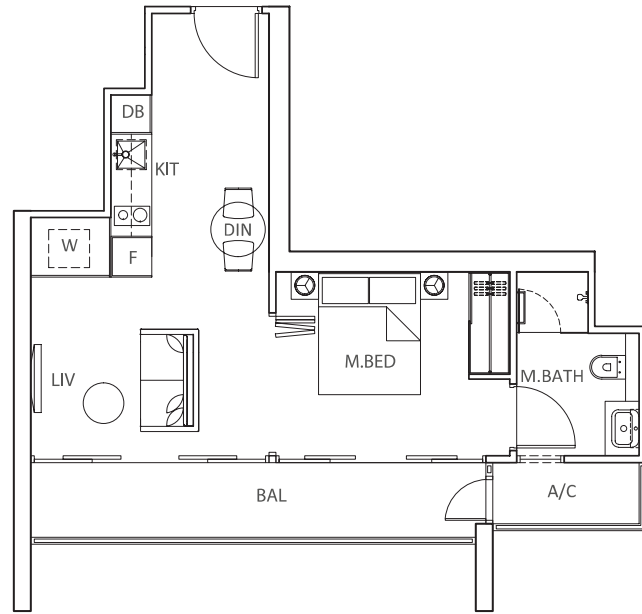
1-Bedroom
 Approx 52 sqm
 (Includes A/C ledge 2 sqm, planter 6 sqm & PES 8 sqm)
 Double volume for liv/din & m.bed



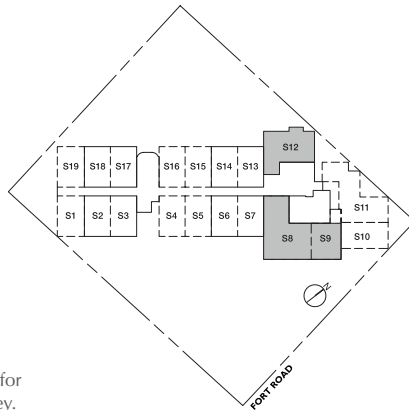
#01-06 S12

TYPE A4

1-Bedroom
 Approx 46 sqm
 (Includes A/C ledge 3 sqm & balcony 8 sqm)

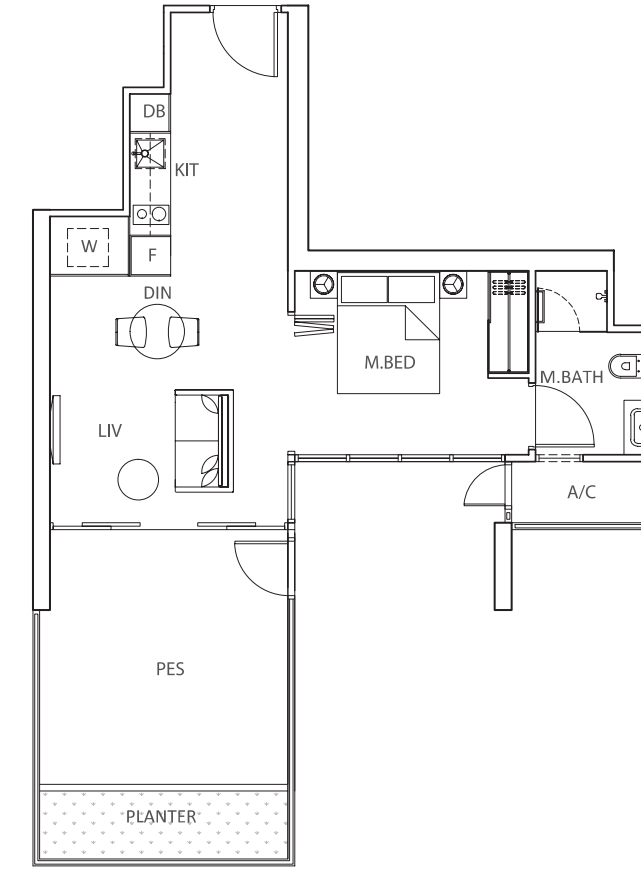


#(02,03,04)-01 S8,9



TYPE A4-G

1-Bedroom
 Approx 60 sqm
 (Includes A/C ledge 3 sqm, planter 4 sqm & PES 14 sqm)



#01-01 S8,9

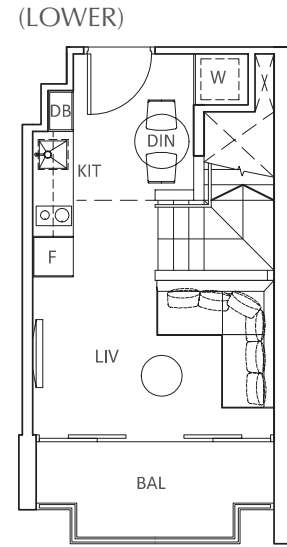


The plans are subject to change as may be required or approved by the relevant authorities. These are not drawn to scale and are for the purpose of visual presentation of the different layouts that are available. Areas are estimates only and are subject to final survey.

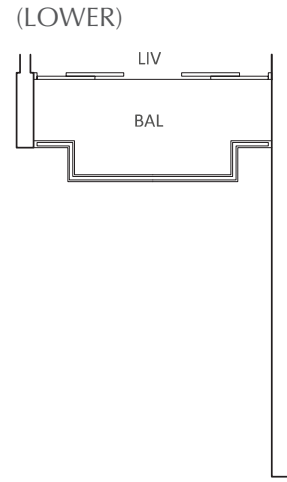
The plans are subject to change as may be required or approved by the relevant authorities. These are not drawn to scale and are for the purpose of visual presentation of the different layouts that are available. Areas are estimates only and are subject to final survey.

TYPE A5L

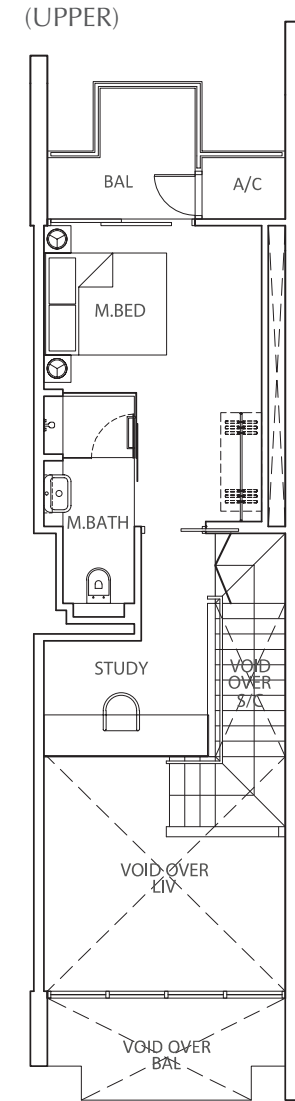
1-Bedroom Loft
 Approx 76 sqm
 (Includes A/C ledge 2 sqm, balcony 9 sqm & void 21 sqm)



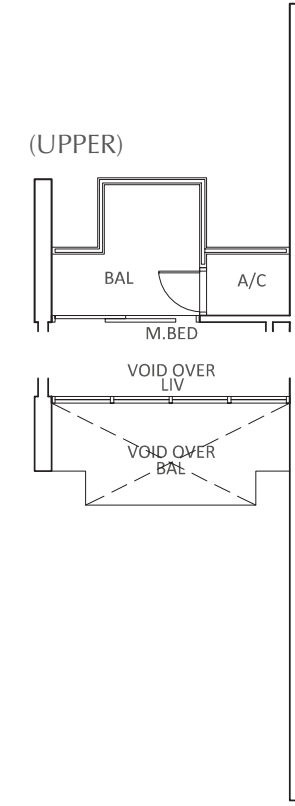
- #(05,07,09,11)-05 S6,14 (MIRRORED)
- #(05,07,09)-07 S4,16 (MIRRORED)
- #(05,07,09)-09 S2,18 (MIRRORED)
- #(05,07,09)-06 S5,15
- #(05,07,09)-08 S3,17



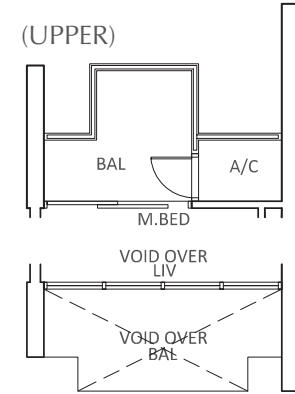
#(05,07,09,11)-04 S7,13



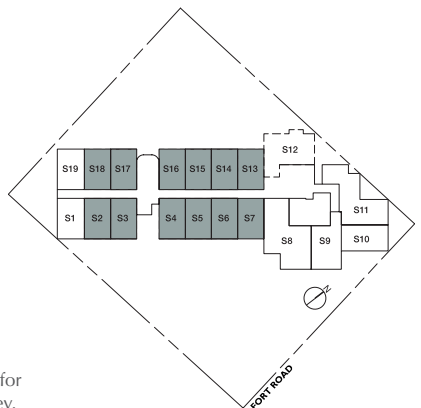
- #(05,07,09)-09 S2,18 (MIRRORED)
- #(05,07,09)-08 S3,17



#(05,07,09,11)-04 S7,13



- #(05,07,09,11)-05 S6,14 (MIRRORED)
- #(05,07,09)-07 S4,16 (MIRRORED)
- #(05,07,09)-06 S5,15



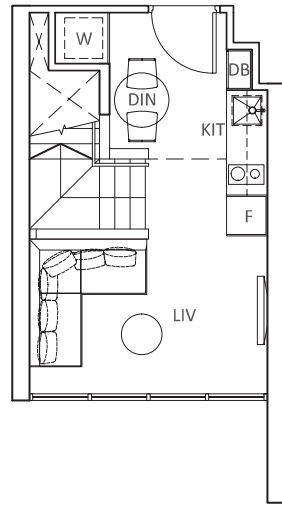
The plans are subject to change as may be required or approved by the relevant authorities. These are not drawn to scale and are for the purpose of visual presentation of the different layouts that are available. Areas are estimates only and are subject to final survey.

The plans are subject to change as may be required or approved by the relevant authorities. These are not drawn to scale and are for the purpose of visual presentation of the different layouts that are available. Areas are estimates only and are subject to final survey.

TYPE A5aL

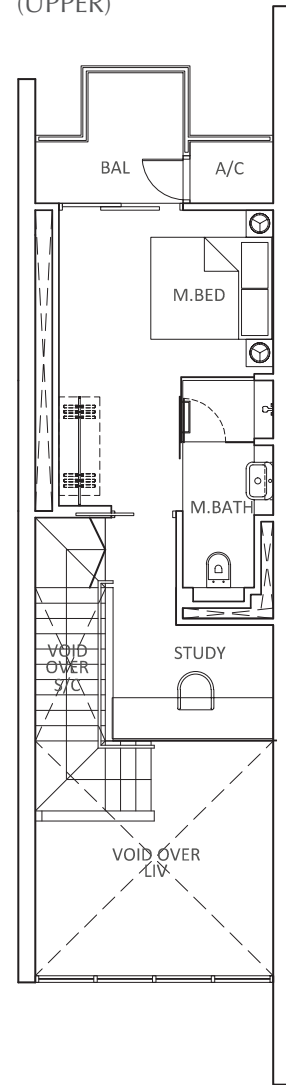
1-Bedroom Loft
 Approx 66 sqm
 (Includes A/C ledge 2 sqm, balcony 4 sqm & void 16 sqm)

(LOWER)



#(05,07,09)-10 S1,19

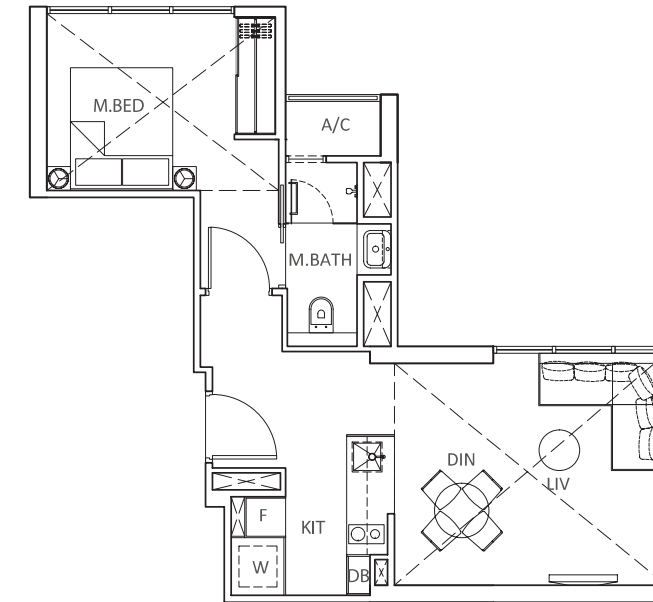
(UPPER)



The plans are subject to change as may be required or approved by the relevant authorities. These are not drawn to scale and are for the purpose of visual presentation of the different layouts that are available. Areas are estimates only and are subject to final survey.

TYPE A6

1-Bedroom
 Approx 41 sqm
 (Includes A/C ledge 2 sqm)
 Double volume for liv/din & m.bed



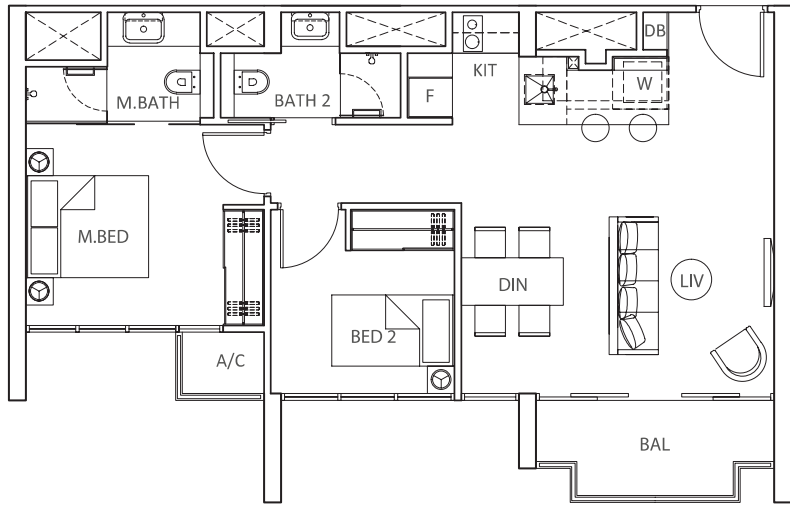
#(05,07,09,11,13)-01 S11



The plans are subject to change as may be required or approved by the relevant authorities. These are not drawn to scale and are for the purpose of visual presentation of the different layouts that are available. Areas are estimates only and are subject to final survey.

TYPE B1

2-Bedroom
 Approx 63 sqm
 (Includes A/C ledge 2 sqm & balcony 5 sqm)



- #11-07 S3,2,1
- #15-03 S3,2,1
- #(17,19,21)-05 S3,2,1
- #(17,19,21)-04 S6,5,4

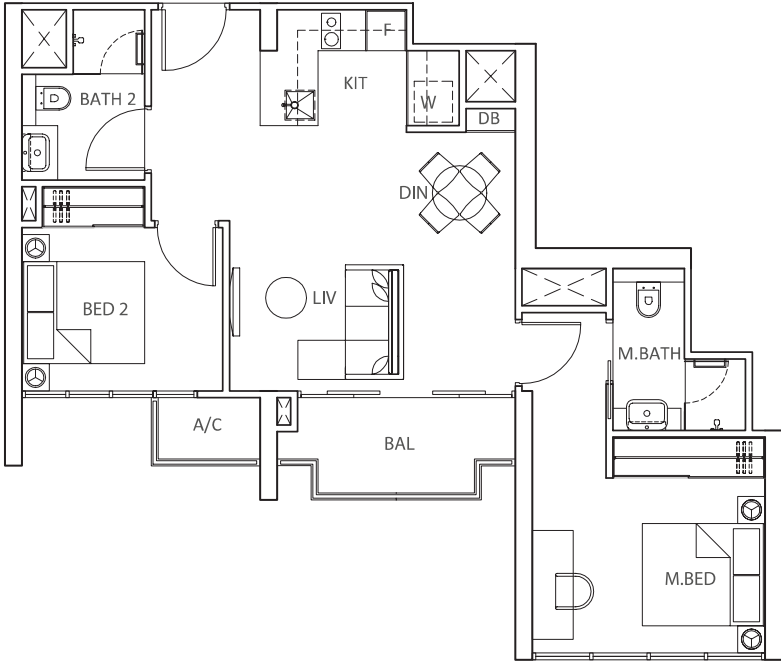
- #11-08 S17,18,19 (MIRRORED)
- #(05,07,09)-11 S17,18,19 (MIRRORED)



The plans are subject to change as may be required or approved by the relevant authorities. These are not drawn to scale and are for the purpose of visual presentation of the different layouts that are available. Areas are estimates only and are subject to final survey.

TYPE B2

2-Bedroom
 Approx 65 sqm
 (Includes A/C ledge 2 sqm & balcony 5 sqm)



#(17,19,21)-03 S7,8

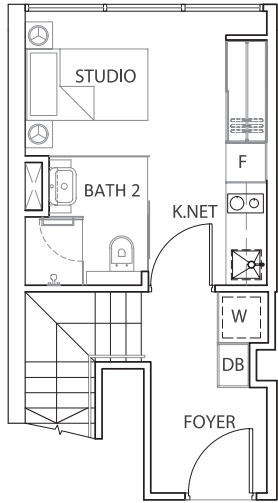


The plans are subject to change as may be required or approved by the relevant authorities. These are not drawn to scale and are for the purpose of visual presentation of the different layouts that are available. Areas are estimates only and are subject to final survey.

TYPE B3L

2-Bedroom Loft
 Approx 77 sqm
 (Includes A/C ledge 2 sqm,
 balcony 8 sqm & void 4 sqm)

(LOWER)

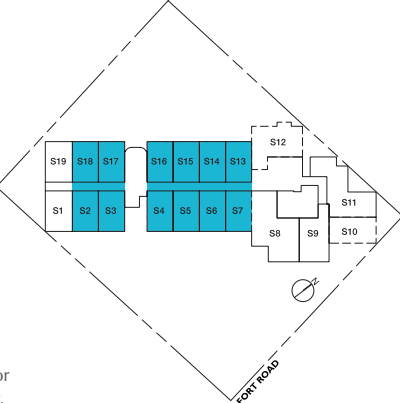
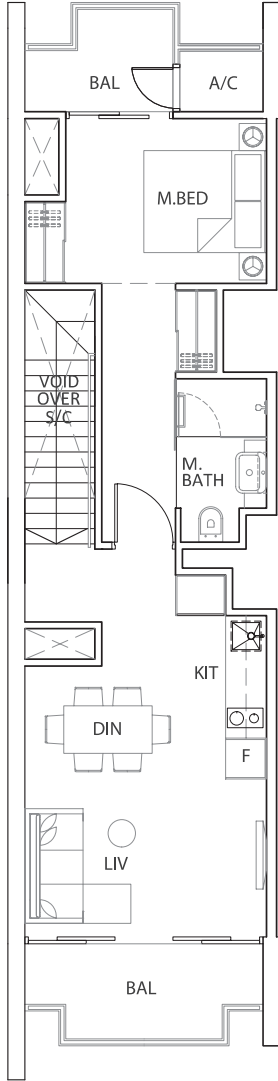


- #13-05 S14,6
- #15-09 S14,6
- #(17,19)-11 S14,6
- #15-07 S16,4
- #(17,19)-09 S16,4
- #15-05 S18,2
- #(17,19,21)-07 S18,2

- #13-06 S13,7 (MIRRORED)
- #15-10 S13,7 (MIRRORED)
- #(17,19)-12 S13,7 (MIRRORED)

- #15-08 S15,5 (MIRRORED)
- #(17,19)-10 S15,5 (MIRRORED)
- #15-06 S17,3 (MIRRORED)
- #(17,19,21)-08 S17,3 (MIRRORED)

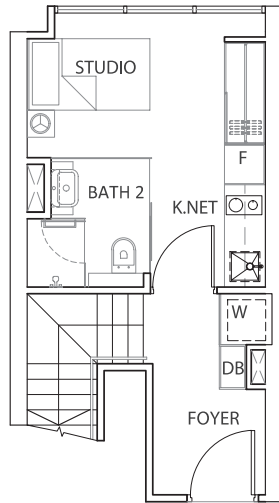
(UPPER)



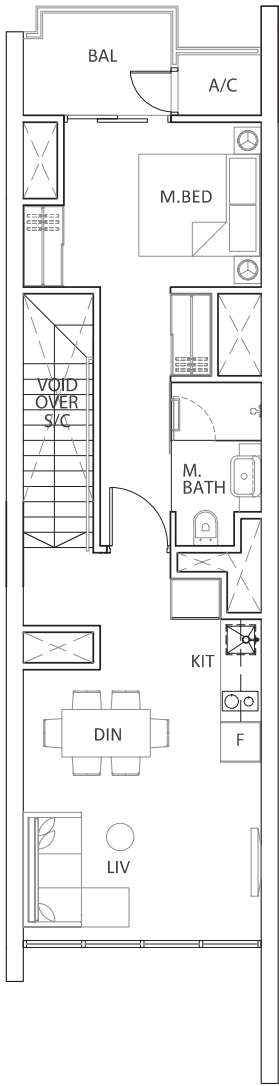
TYPE B3aL

2-Bedroom Loft
 Approx 72 sqm
 (Includes A/C ledge 2 sqm, balcony 3 sqm & void 4 sqm)

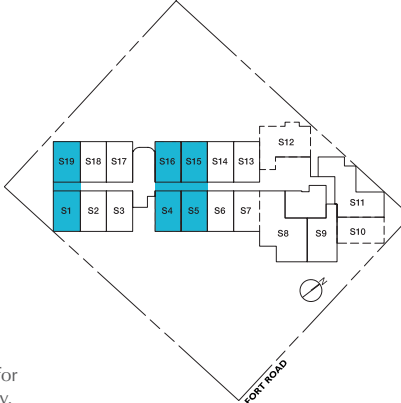
(LOWER)



(UPPER)



- #15-04 S19,1
- #(17,19,21)-06 S19,1



The plans are subject to change as may be required or approved by the relevant authorities. These are not drawn to scale and are for the purpose of visual presentation of the different layouts that are available. Areas are estimates only and are subject to final survey.

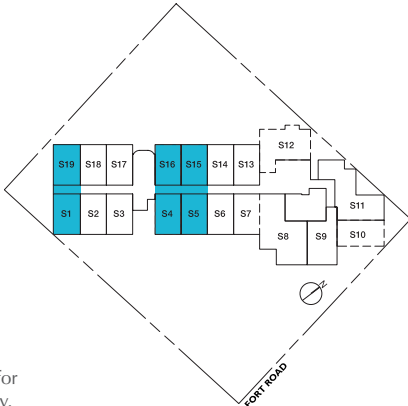
The plans are subject to change as may be required or approved by the relevant authorities. These are not drawn to scale and are for the purpose of visual presentation of the different layouts that are available. Areas are estimates only and are subject to final survey.

TYPE B3bL

2-Bedroom Loft
 Approx 102 sqm
 (Includes A/C ledge 2 sqm, balcony 8 sqm & void 16 sqm)



#21-10 S15,5
 #21-09 S16,4 (MIRRORED)



The plans are subject to change as may be required or approved by the relevant authorities. These are not drawn to scale and are for the purpose of visual presentation of the different layouts that are available. Areas are estimates only and are subject to final survey.

TYPE B3cL

2-Bedroom Loft
 Approx 77 sqm
 (Includes A/C ledge 2 sqm, balcony 8 sqm & void 4 sqm)
 Double volume for m.bed & bal



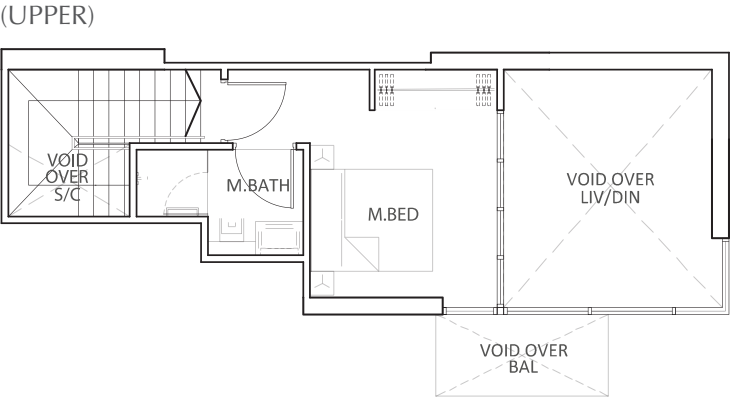
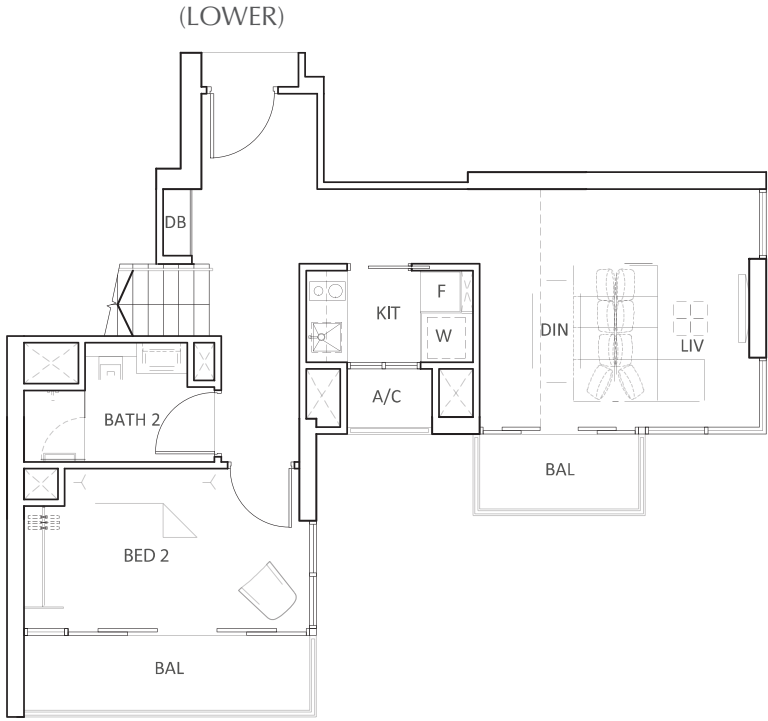
#21-11 S14,6
 #21-12 S13,7 (MIRRORED)



The plans are subject to change as may be required or approved by the relevant authorities. These are not drawn to scale and are for the purpose of visual presentation of the different layouts that are available. Areas are estimates only and are subject to final survey.

TYPE B4L

2-Bedroom Loft
 Approx 98 sqm
 (Includes A/C ledge 2 sqm, balcony 8 sqm & void 19 sqm)



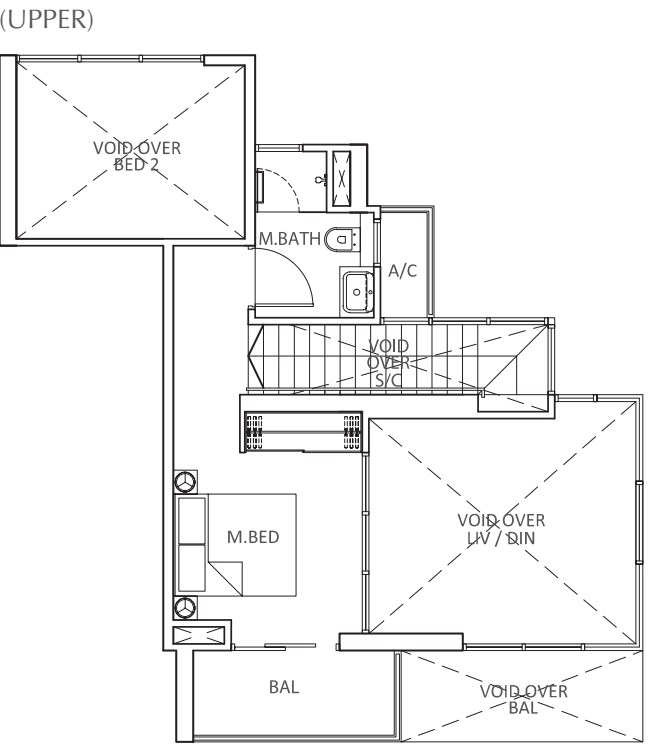
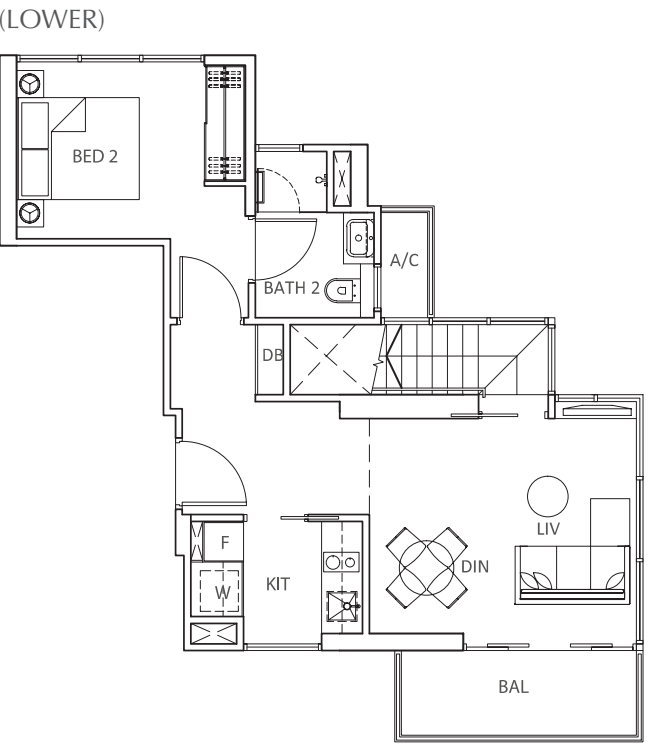
#(05,07,09,11,13)-02 S9,10



The plans are subject to change as may be required or approved by the relevant authorities. These are not drawn to scale and are for the purpose of visual presentation of the different layouts that are available. Areas are estimates only and are subject to final survey.

TYPE B5L

2-Bedroom Loft
 Approx 109 sqm
 (Includes A/C ledge 4 sqm, balcony 9 sqm & void 33 sqm)



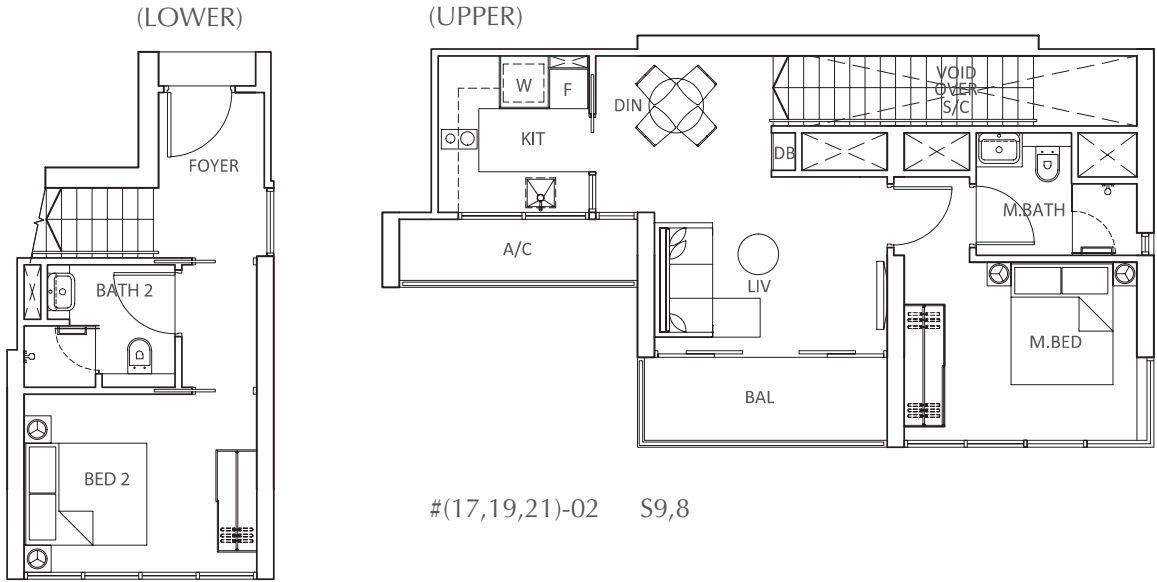
#(17,19,21)-01 S11



The plans are subject to change as may be required or approved by the relevant authorities. These are not drawn to scale and are for the purpose of visual presentation of the different layouts that are available. Areas are estimates only and are subject to final survey.

TYPE B6L

2-Bedroom Loft
 Approx 78 sqm
 (Includes A/C ledge 4 sqm, balcony 5 sqm & void 6 sqm)



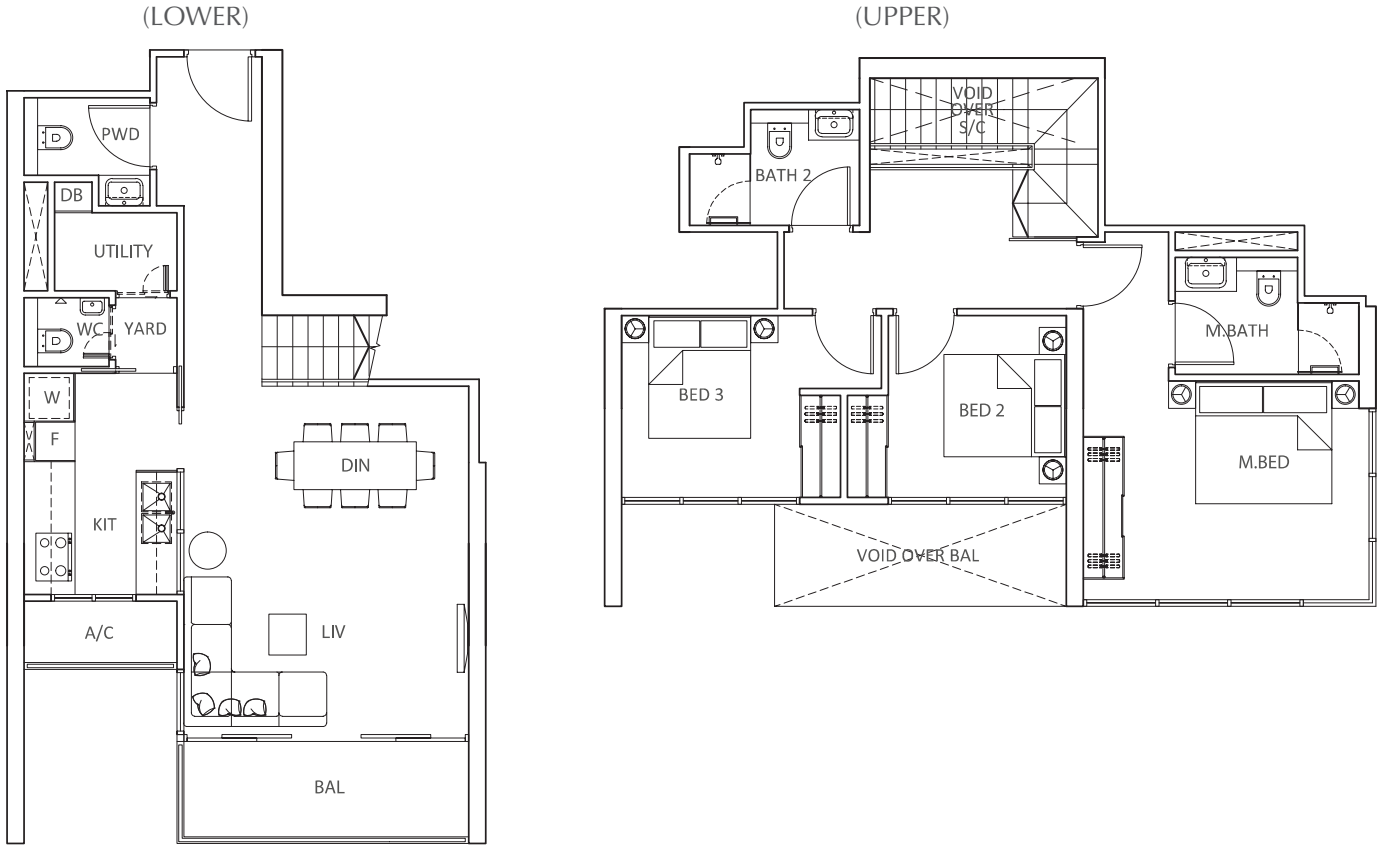
#(17,19,21)-02 S9,8



The plans are subject to change as may be required or approved by the relevant authorities. These are not drawn to scale and are for the purpose of visual presentation of the different layouts that are available. Areas are estimates only and are subject to final survey.

TYPE C1L

3-Bedroom
 Approx 125 sqm
 (Includes A/C ledge 3 sqm, balcony 7 sqm & void 11 sqm)



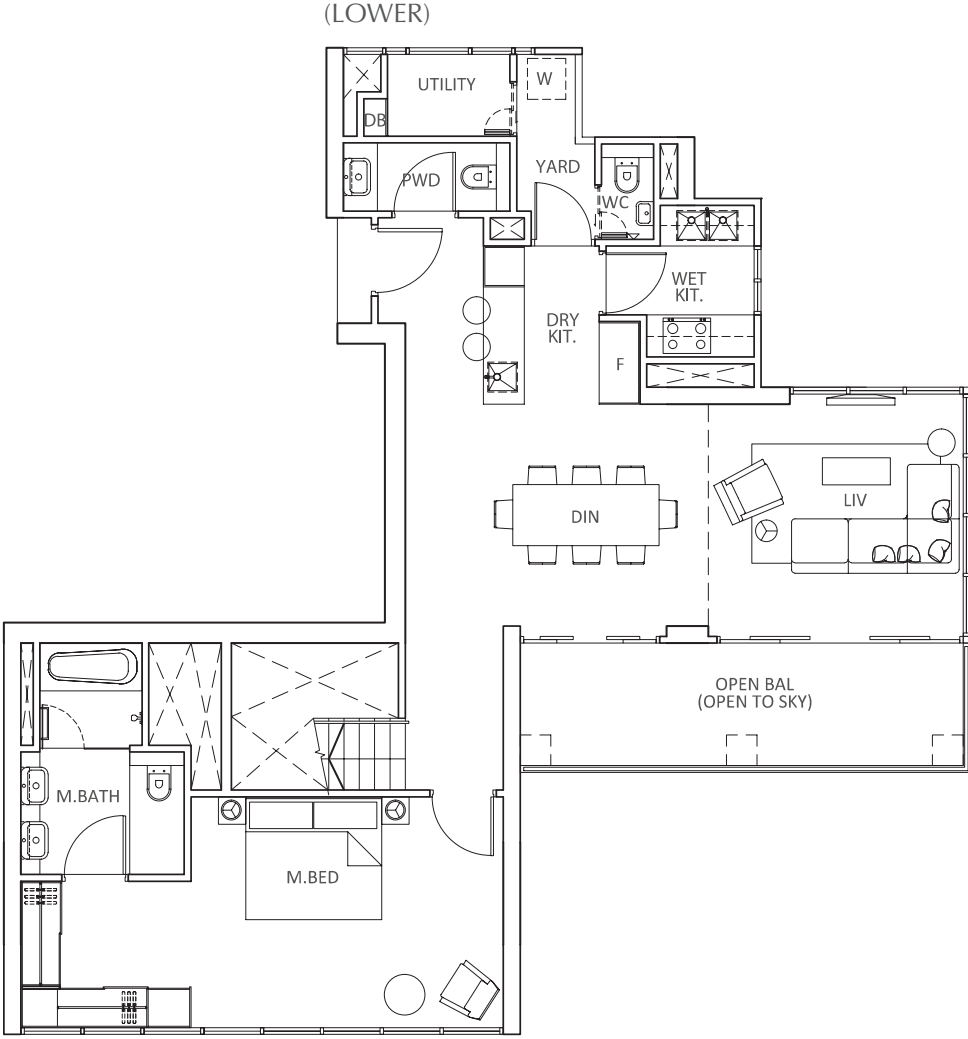
#(05,07,09,11,13)-03 S8,9



The plans are subject to change as may be required or approved by the relevant authorities. These are not drawn to scale and are for the purpose of visual presentation of the different layouts that are available. Areas are estimates only and are subject to final survey.

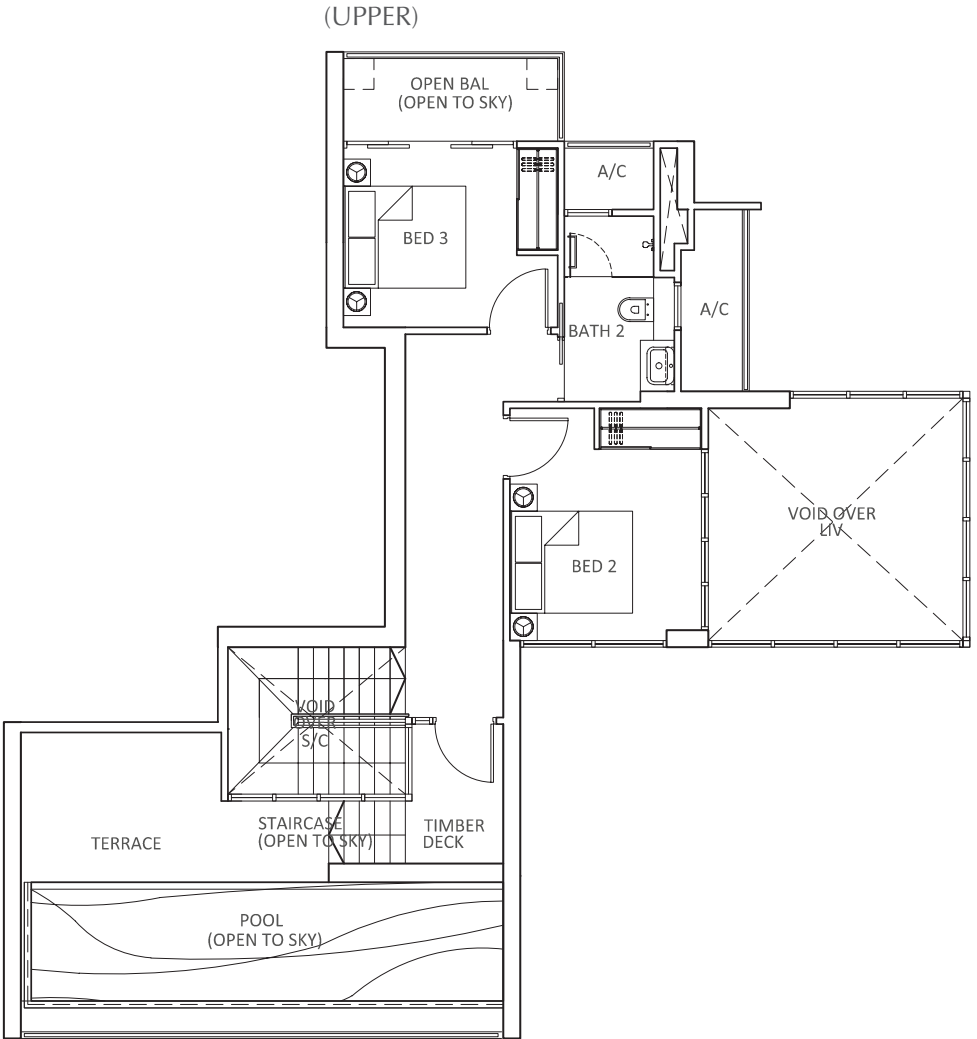
TYPE P1

Penthouse
 Approx 200 sqm
 (Includes A/C ledge 5 sqm, balcony 17 sqm, roof terrace/pool 31 sqm & void 20 sqm)



#23-01 S11,10,9

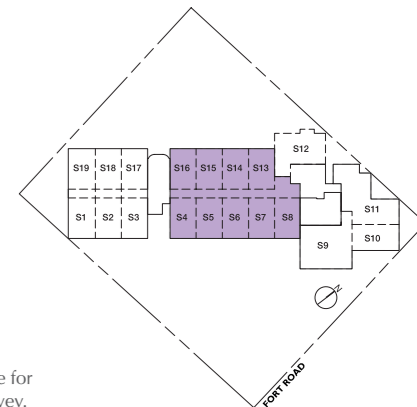
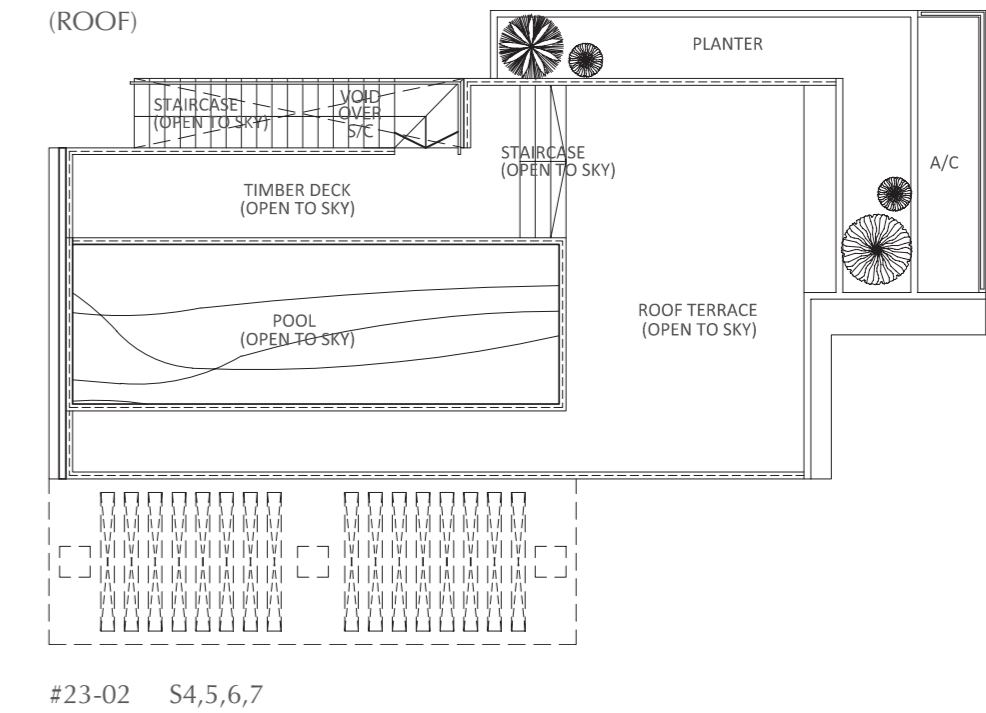
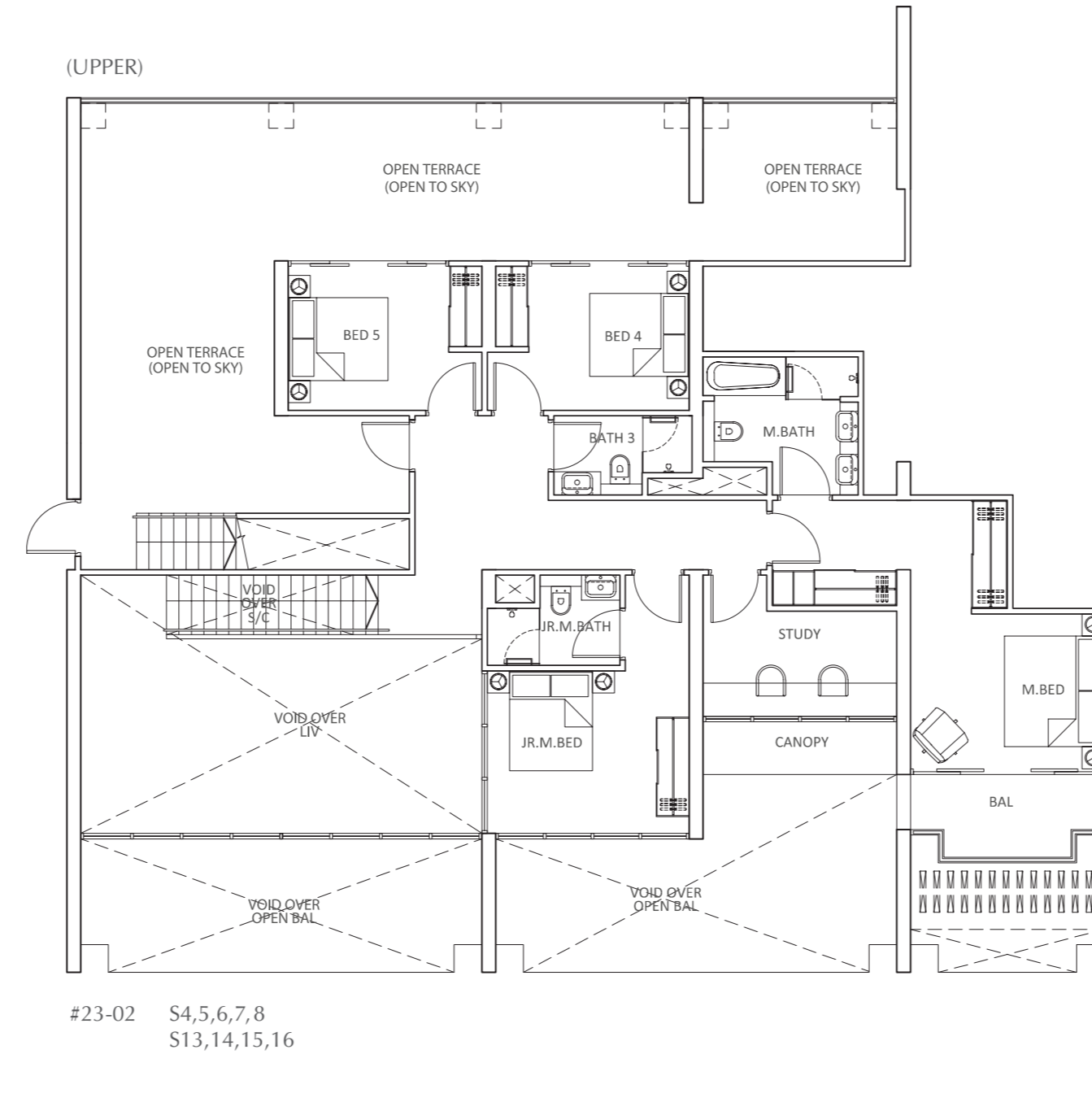
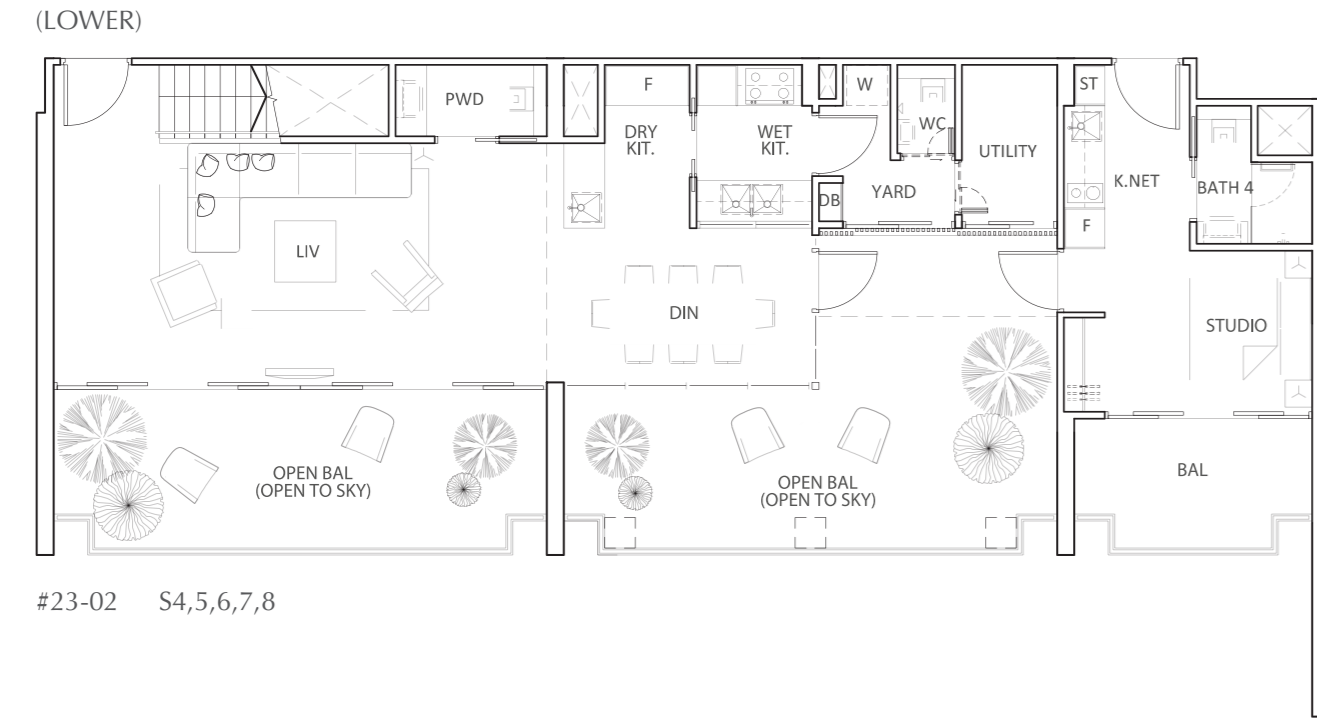
The plans are subject to change as may be required or approved by the relevant authorities. These are not drawn to scale and are for the purpose of visual presentation of the different layouts that are available. Areas are estimates only and are subject to final survey.



The plans are subject to change as may be required or approved by the relevant authorities. These are not drawn to scale and are for the purpose of visual presentation of the different layouts that are available. Areas are estimates only and are subject to final survey.

TYPE P2

Penthouse
 Approx 452 sqm
 (Includes A/C ledge 5 sqm, balcony 55 sqm, planter 9 sqm, open/roof terrace/pool 125 sqm & void 81 sqm)



The plans are subject to change as may be required or approved by the relevant authorities. These are not drawn to scale and are for the purpose of visual presentation of the different layouts that are available. Areas are estimates only and are subject to final survey.

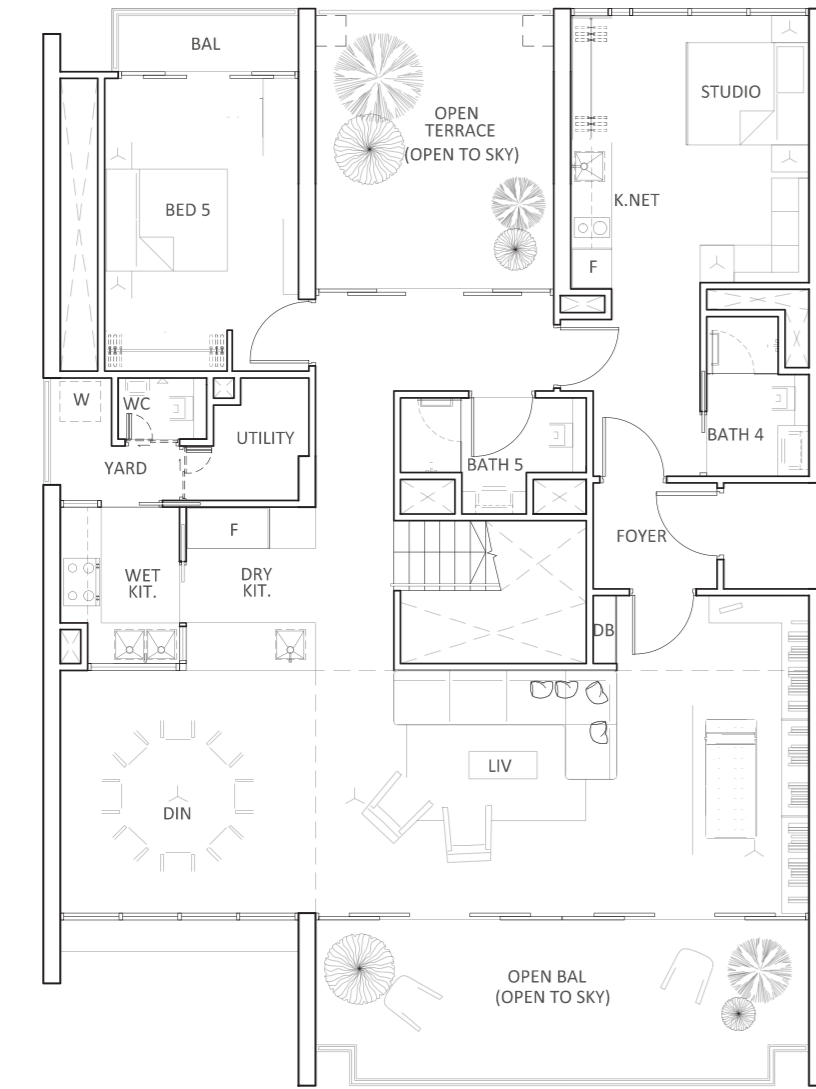
The plans are subject to change as may be required or approved by the relevant authorities. These are not drawn to scale and are for the purpose of visual presentation of the different layouts that are available. Areas are estimates only and are subject to final survey.

The plans are subject to change as may be required or approved by the relevant authorities. These are not drawn to scale and are for the purpose of visual presentation of the different layouts that are available. Areas are estimates only and are subject to final survey.

TYPE P3

Penthouse
 Approx 401 sqm
 (Includes A/C ledge 6 sqm, balcony 26 sqm, planter 7 sqm, open/roof terrace/pool 87sqm & void 71 sqm)

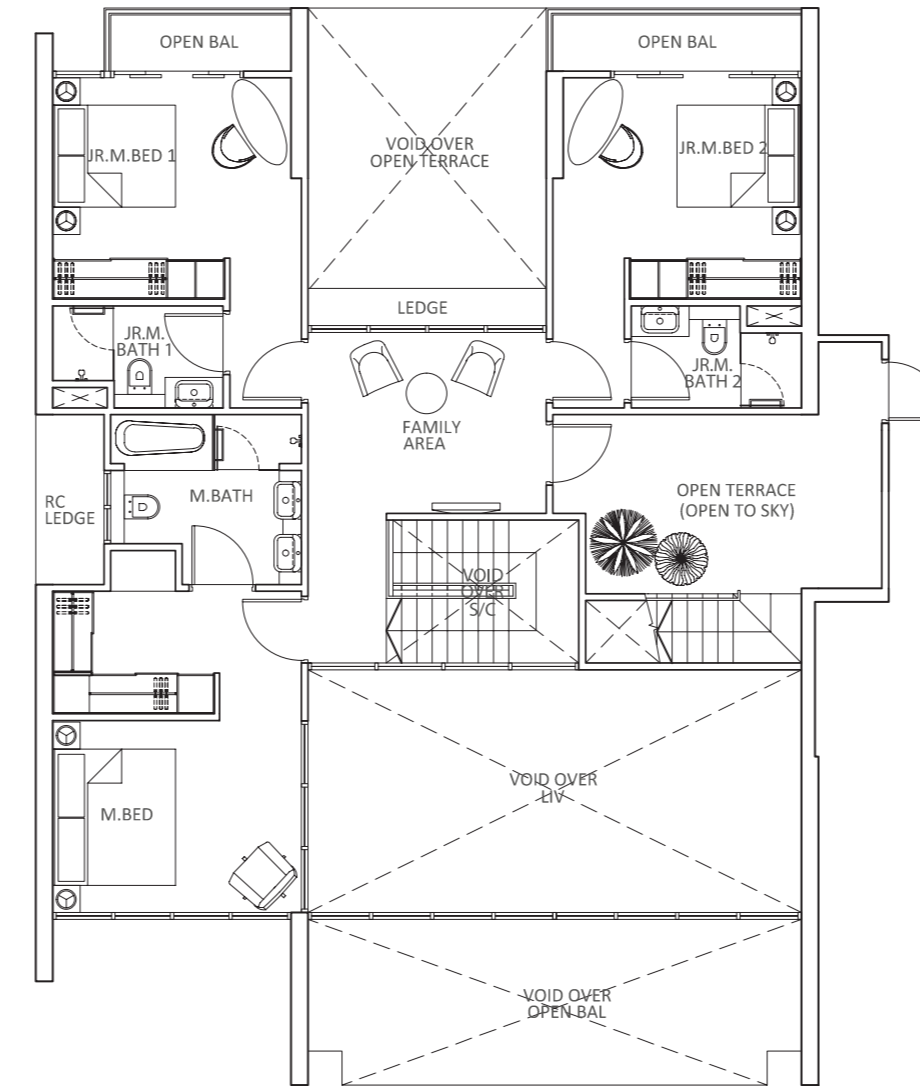
(LOWER)



#23-03 S3,2,1,17,18,19

The plans are subject to change as may be required or approved by the relevant authorities. These are not drawn to scale and are for the purpose of visual presentation of the different layouts that are available. Areas are estimates only and are subject to final survey.

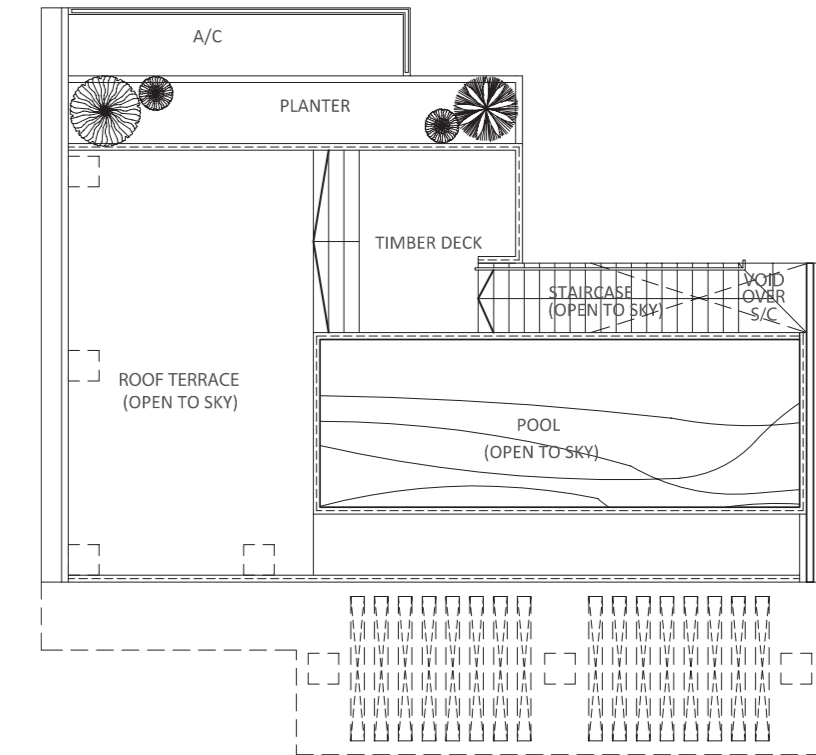
(UPPER)



#23-03 S3,2,1,17,18,19

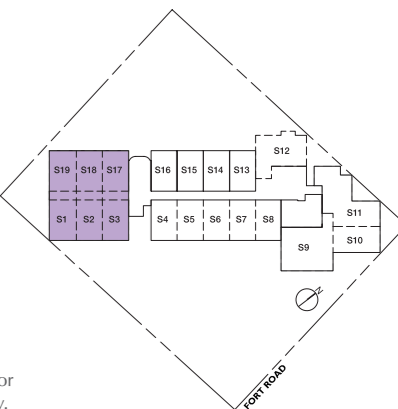
The plans are subject to change as may be required or approved by the relevant authorities. These are not drawn to scale and are for the purpose of visual presentation of the different layouts that are available. Areas are estimates only and are subject to final survey.

(ROOF)



#23-03 S3,2,1

The plans are subject to change as may be required or approved by the relevant authorities. These are not drawn to scale and are for the purpose of visual presentation of the different layouts that are available. Areas are estimates only and are subject to final survey.



For the pleasure of ownership, please call:

6844 6996

www.fulcrum.sg



Developer: CEL-Fort Pte Ltd • Tenure of Land: FH • Lot No.: 4670M, 4671W, 4672V, 4673P, 4674T, 4675A, 4676K, 4677N, 4681X, 4682L, 4683C, 4684M, 4685W, 4686V, 4687P, 4688T & 6144A (collectively now known as Lot No. 7195K) all of Mukim 25 AT FORT ROAD • Encumbrances: Mortgage IC/115271C and Mortgage IC/166928H both in favour of United Overseas Bank Limited
Developer Licence No.: C0791 • Expected Date of Vacant Possession: 31 Dec 2016 • Expected Date of Legal Completion: 31 Dec 2019